

NUPPA

The Protein Facility

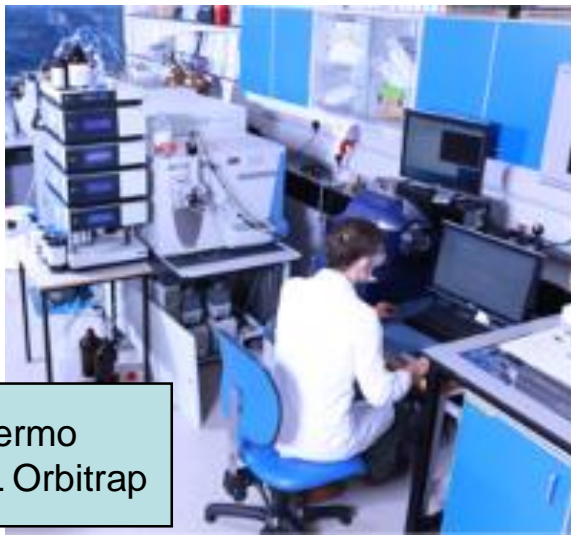
Achim Treumann

NUPPA, University of Newcastleth

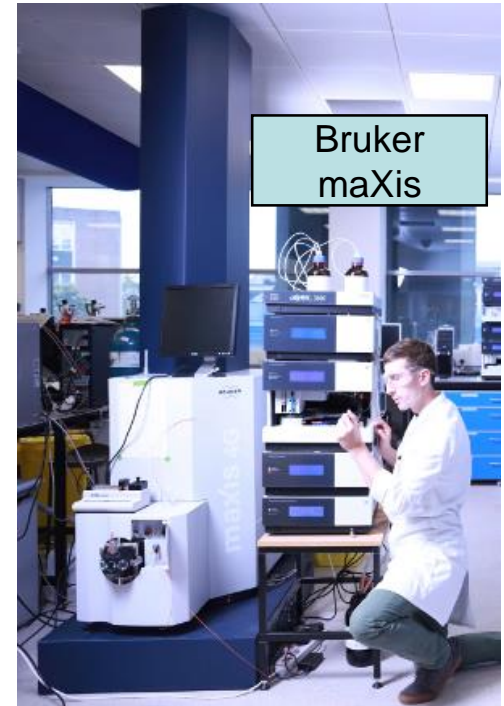
Cookson Building 4 Floor

Achim.Treumann@ncl.ac.uk

0044 191 2084804



Thermo
LTQ XL Orbitrap



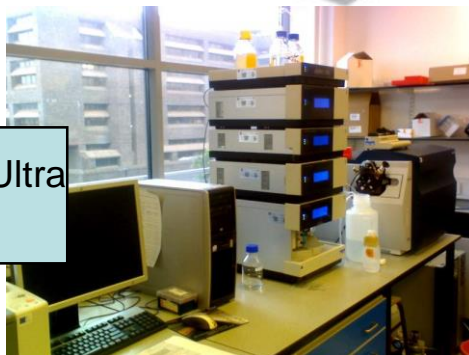
Bruker
maXis



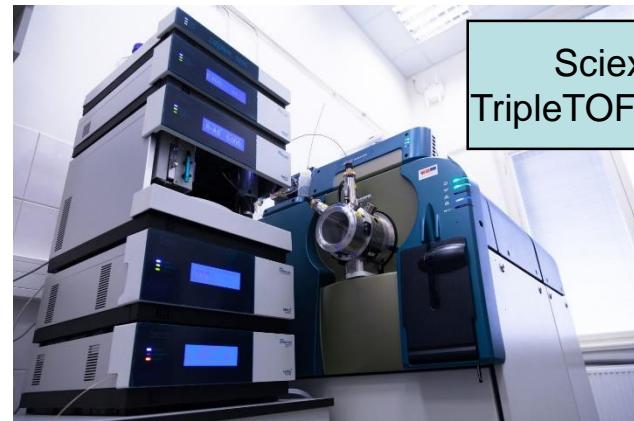
Bruker ultraflex II
MALDI-TOF



Sciex
QTrap 4000



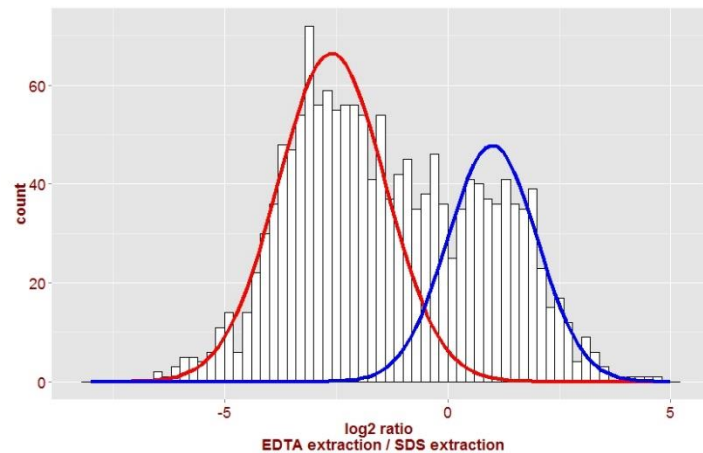
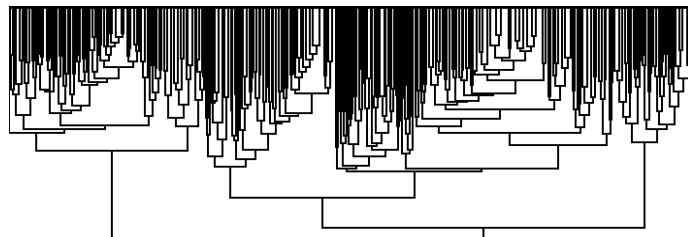
Bruker HCT Ultra
Iontrap



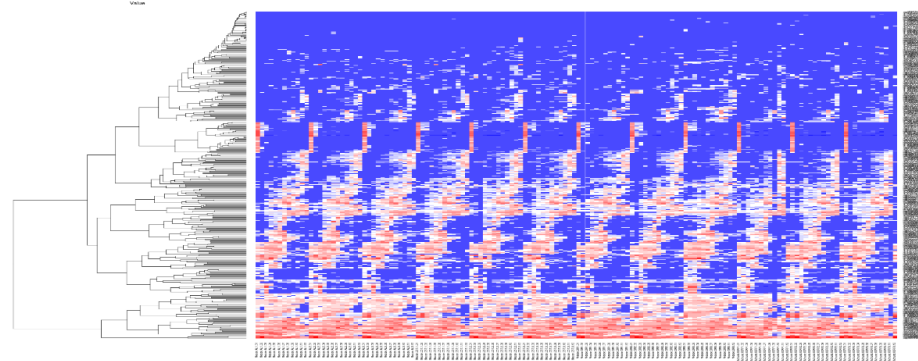
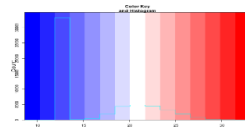
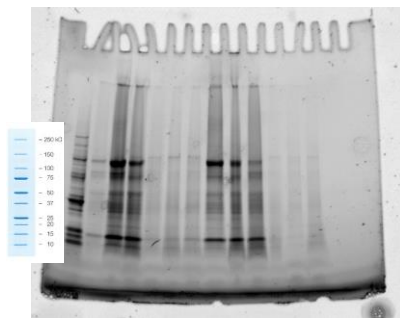
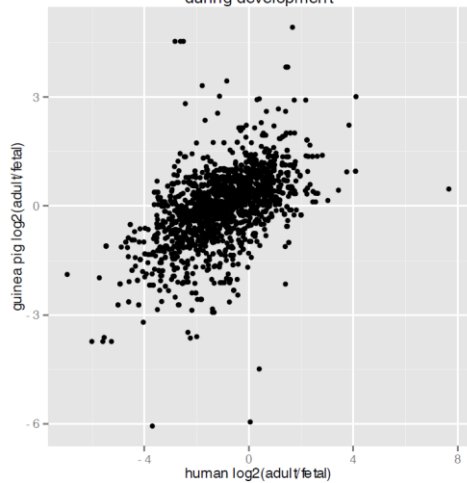
Sciex
TripleTOF 6600

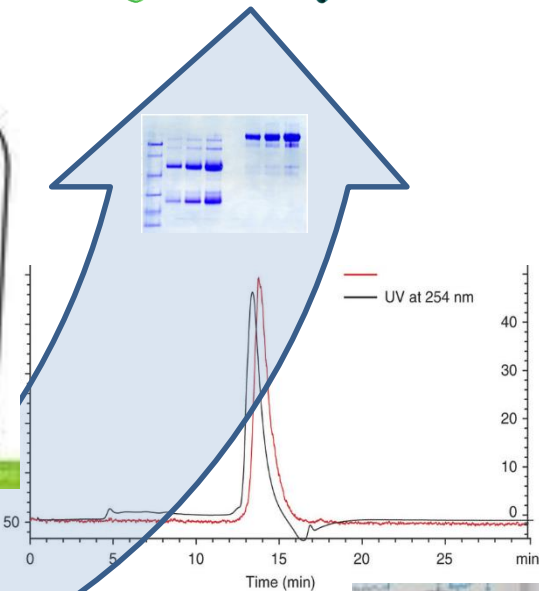
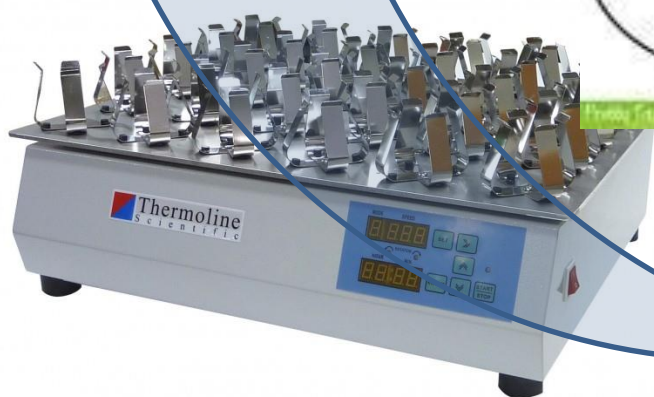
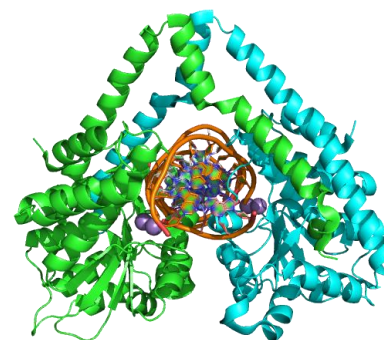




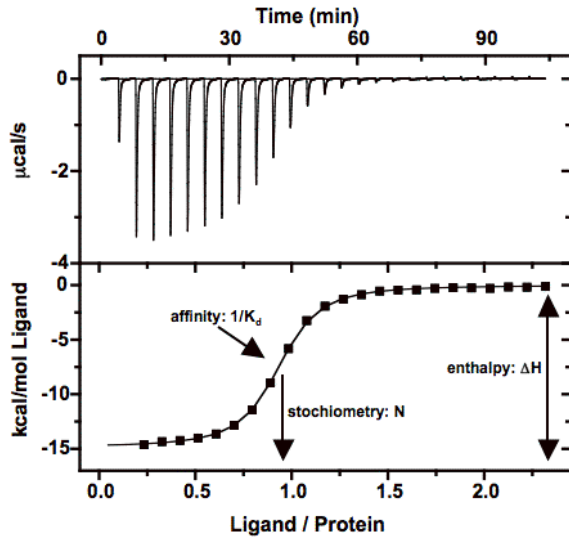


Correlation of change in relative heart protein concentrations during development

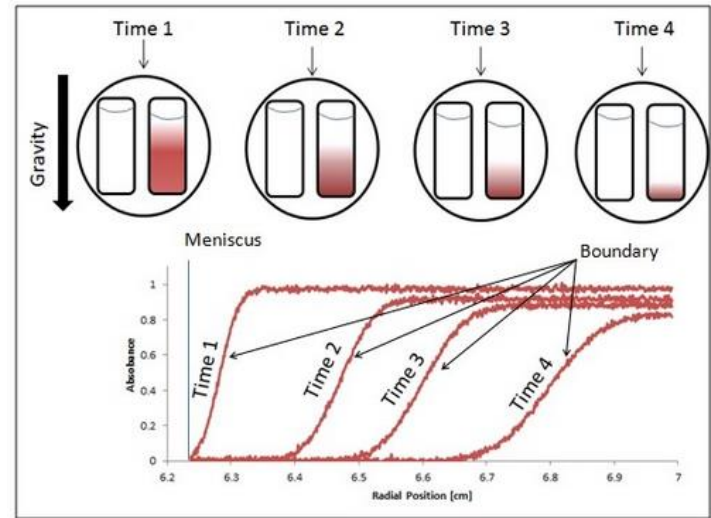




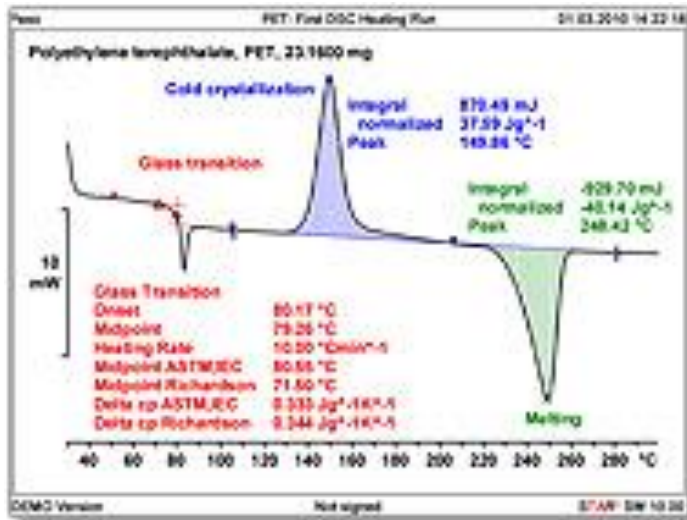
Isothermal Titration Calorimetry (ITC)



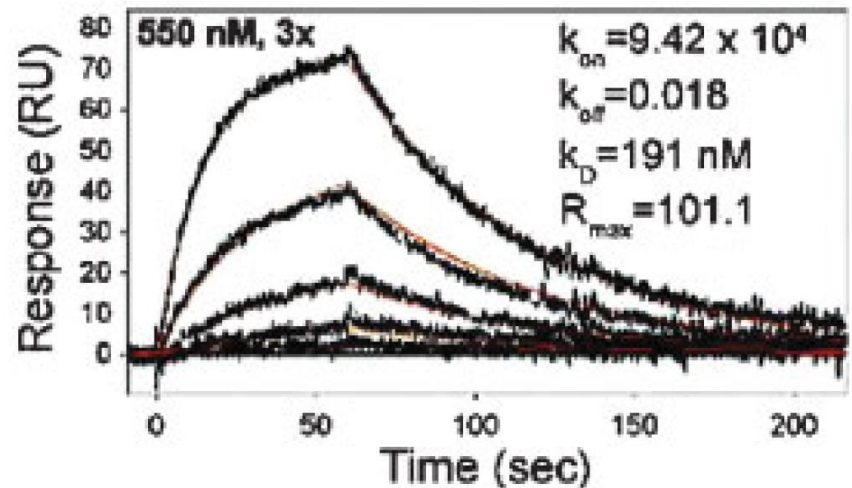
Analytical Ultracentrifugation (AUC)



Differential Scanning Calorimetry (DSC)



Surface Plasmon Resonance



Acknowledgements

- Andrew Porter
- Alexandra Solovyova
- Frances Sidgwick
- Paul Thompson
- Alastair Hawkins

